

Epping 29608

NH Route 125, Capacity Improvement Project



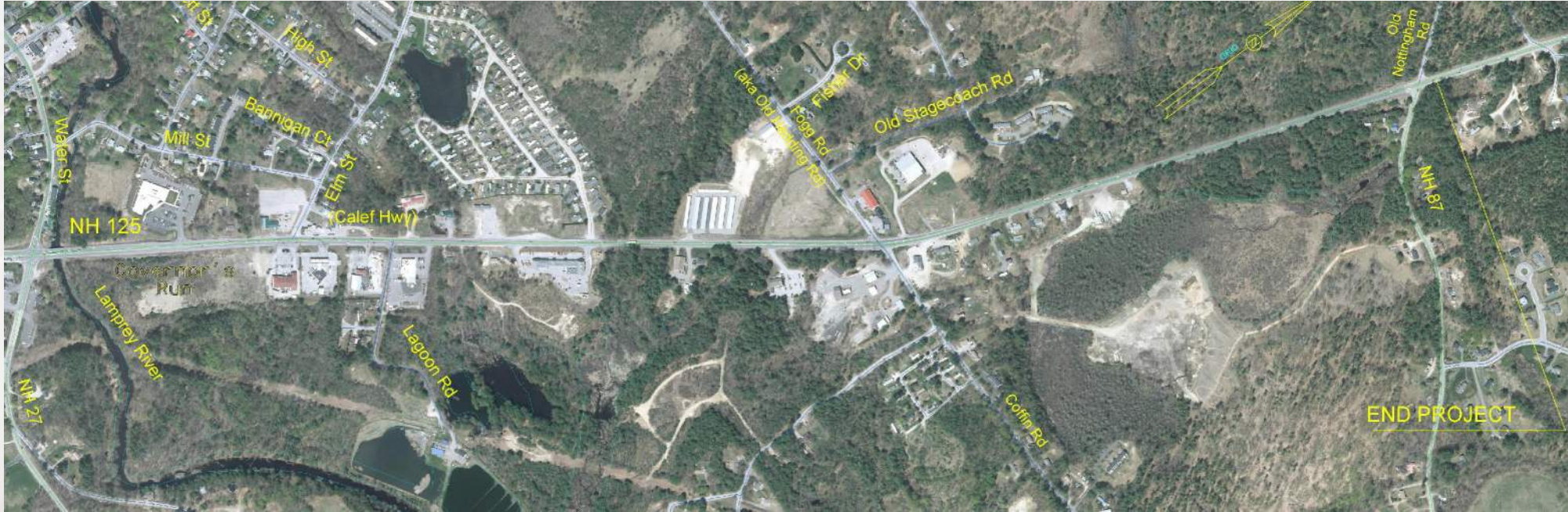
Agenda

- Introductions
- Project Location and Background
- Project Needs and Objectives
- Project Status
- Project Schedule
- Alternatives Presentation & Discussion

Project Location (Southern Half)



Project Location (Northern Half)



Project Background

- Approx. 2.8-mile portion of NH Route 125
 - Numerous intersections (signalized and un-signalized)
 - Southern section; 5 lane section
 - Northern section; 2 and 3 lane section
- NH Route 125 Average Daily Traffic is approximately 19,000 vehicles per day

Project Background (Continued)

- Key link in the area's transportation network
- Utilized by commuters to access NH Route 101
- Serves major commercial development
- Congestion and delays greatly impede traffic operations

Project Needs and Objectives

- **Capacity improvements**
 - Additional lanes; through and/or turning
 - Roadway widening
- **Operational improvements**
 - Signal timing upgrade
 - Signal coordination

Project Needs and Objectives (Continued)

- **Complete streets and context sensitive solutions; balance the needs of all users (motorized and non-motorized)**
 - Pedestrian facilities (sidewalk/path)
 - Bike lanes/shoulders
- **Access management**
 - Driveway re-alignment and/or consolidation

Project Status

- **Traffic counts**
 - Existing
 - Future
- **Alternatives investigation**
 - Identification of areas of concern
 - Development of design alternatives
 - Determination of impacts
 - Prepared draft alternatives study

Project Status (Continued)

- **Public outreach and participation**
 - Public Advisory Committee
 - Public Information and Public Officials meetings
- **Environmental assessment and documentation**
 - Identification of resources
 - Determination of impacts

Project Schedule

Anticipated Date	Activity/Milestone
Summer 2020 to Fall 2025	PAC Meetings
Spring 2021	Selectboard Meeting
Summer 2021	Public Informational/Public Officials Meeting
Summer 2020 to Fall 2022	Alternatives Development/Evaluation, and Preliminary Design, and Draft NEPA Documentation
Winter 2022/2023	Public Hearing
Spring 2023	Final NEPA Documentation
Spring 2023 to Fall 2025	Final Design, Right of Way acquisition, and Permitting
October 2024*	Project Advertisement for Construction
Spring 2025	Begin Construction

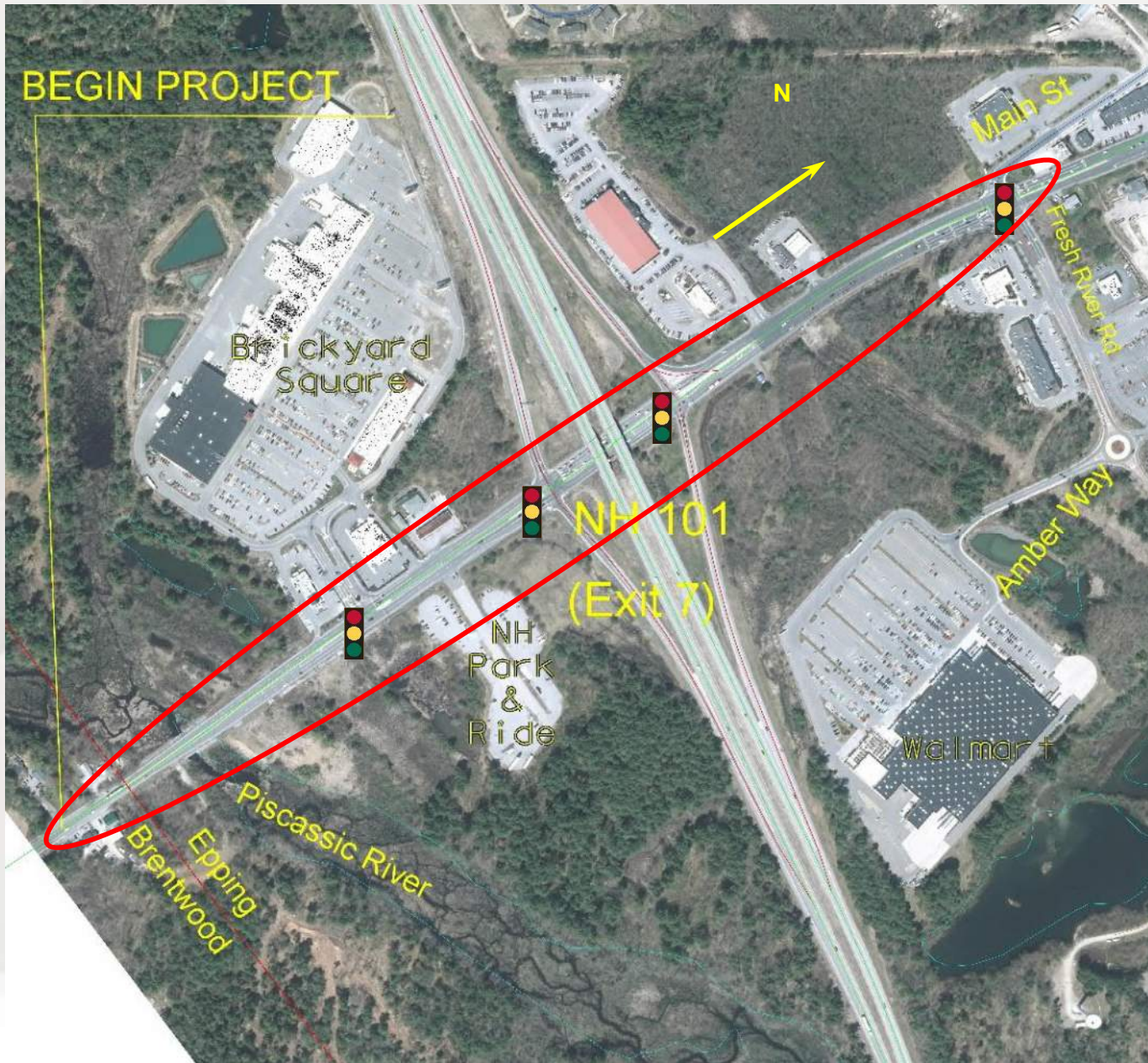
*Current advertising date in the 10-year plan

Alternatives Presentation & Discussion

Proposed Improvement Segments/Components



Brentwood/Epping Town line to Fresh River Rd/Main St



Brentwood/Epping Town line to Fresh River Rd/Main St Park and Ride, CVS, & Mobil Drives – Reloc. Park and Ride Drive Alt



Brentwood/Epping Town line to Fresh River Rd/Main St McDonalds/Toyota Drive



Fresh River Rd/Main St to Coffin Rd

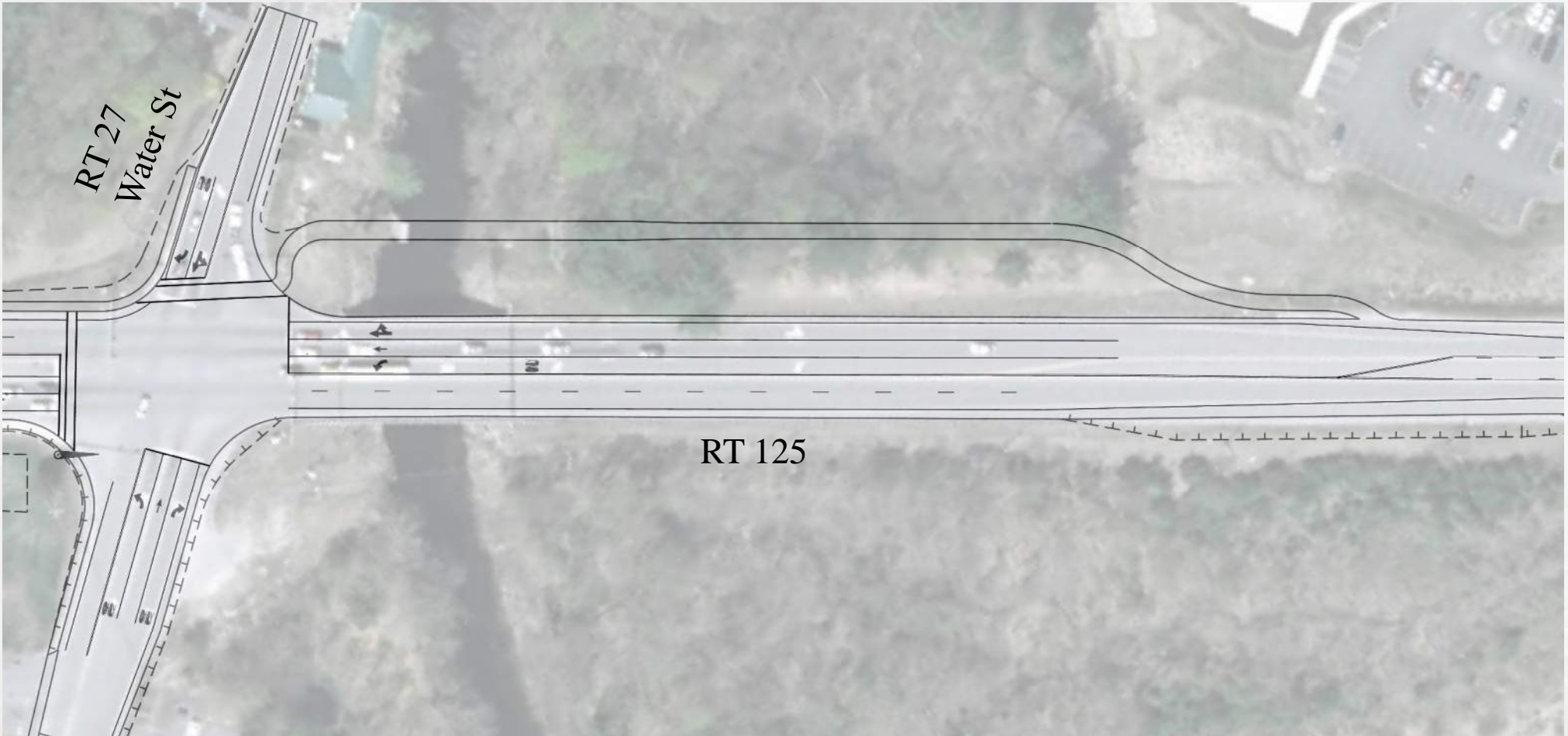


Fresh River Rd/Main St to Coffin Rd

Fresh River Rd to NH 27 (Water St)



Fresh River Rd/Main St to Coffin Rd



Fresh River Rd/Main St to Coffin Rd



Fresh River Rd/Main St to Coffin Rd

NH 27 (Water St) to Coffin Rd

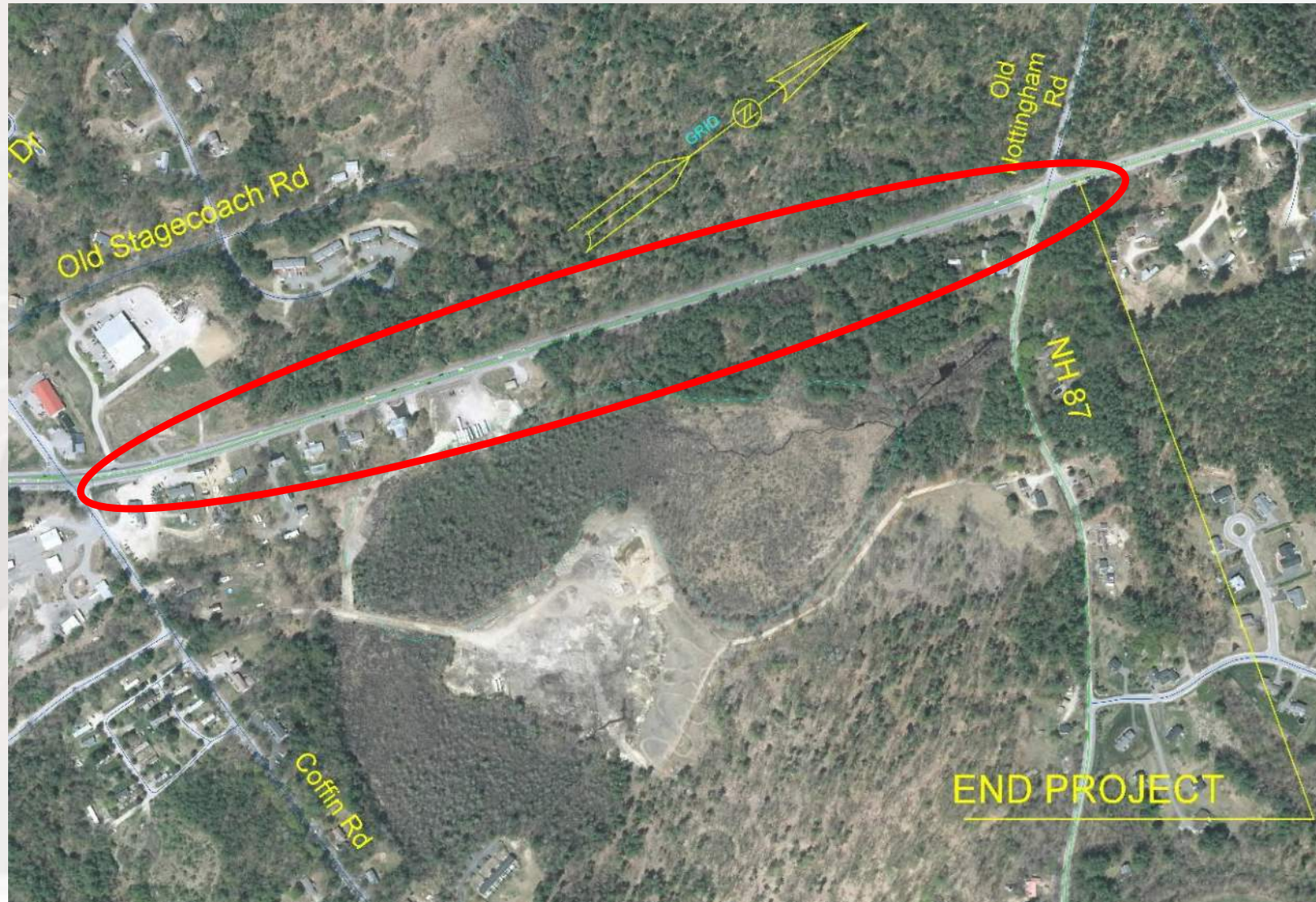


Fogg Rd/Coffin Rd Intersection



NHDOT
District 6
Patrol Shed 608

North of Coffin Rd to NH 87

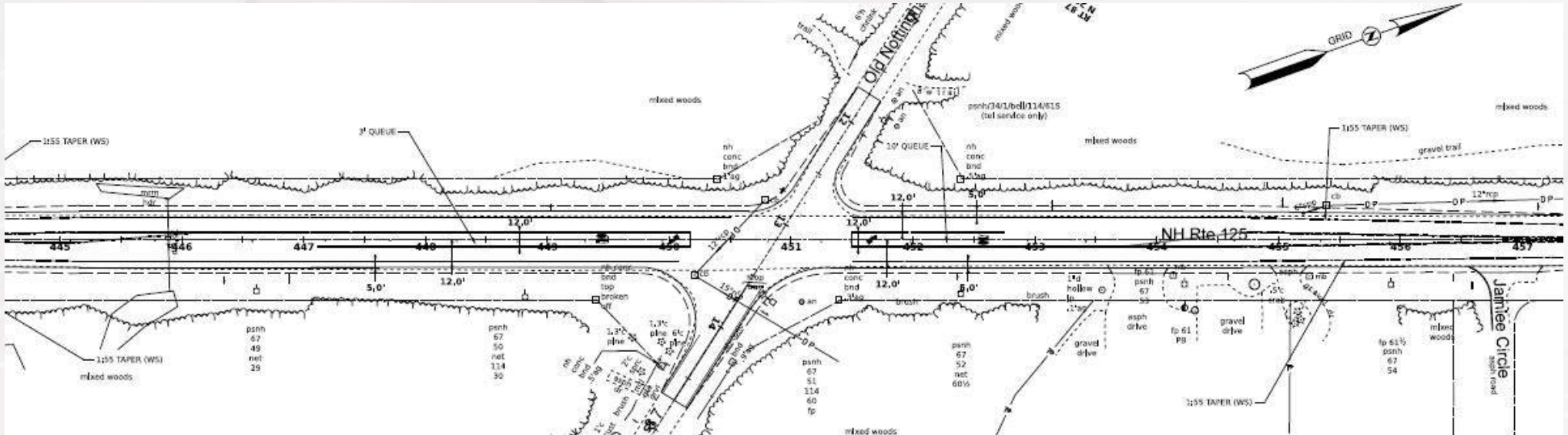


North of Coffin Rd to NH 87

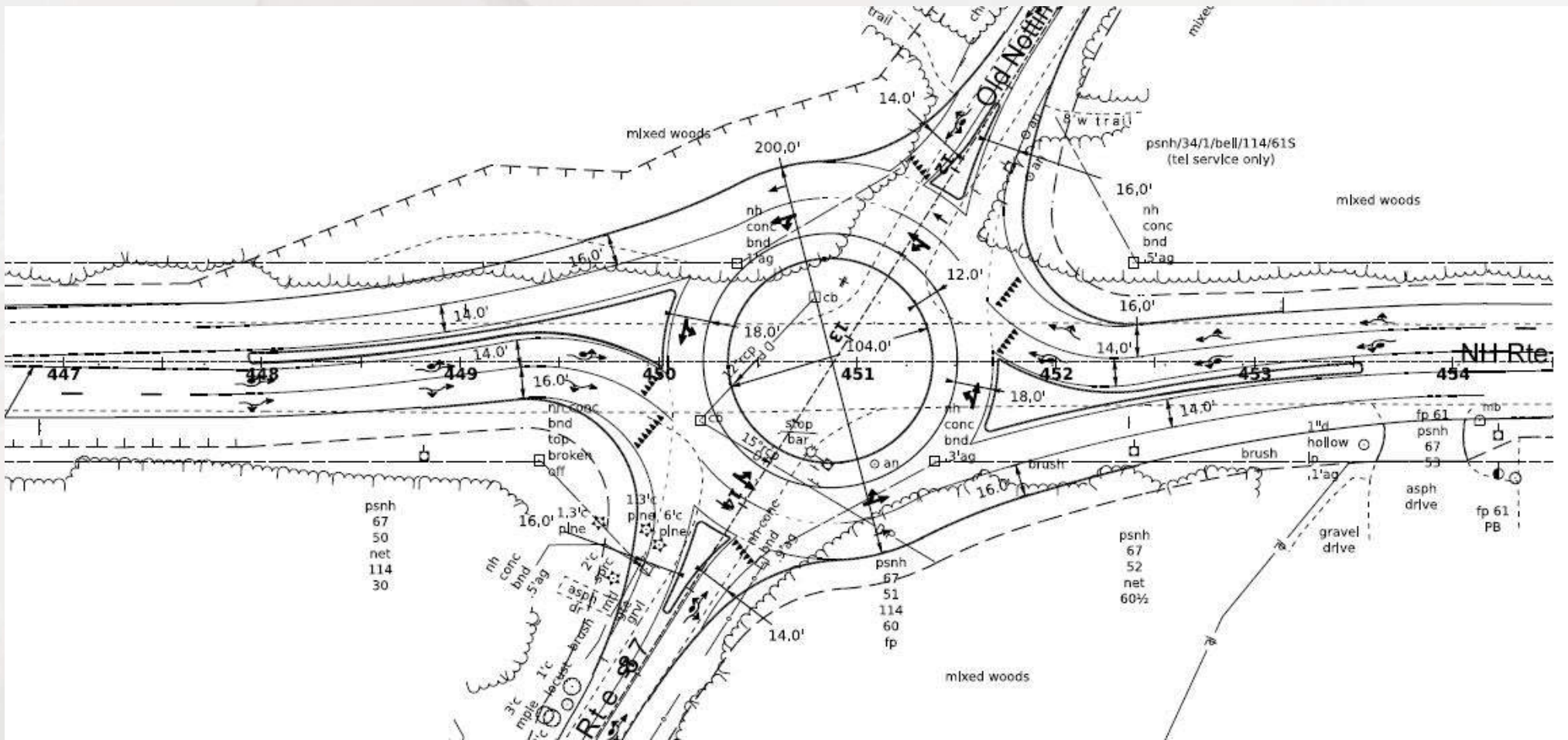
NH 87 intersection with NH 125



North of Coffin Rd to NH 87



North of Coffin Rd to NH 87



Next Steps

- Incorporation of PAC comments
- Public informational meeting
- Public officials meeting
- Finalize engineering study w/ preferred alts.
- Draft environmental document
- Preliminary Plans
- Public Hearing – Winter 2022/2023

Questions?